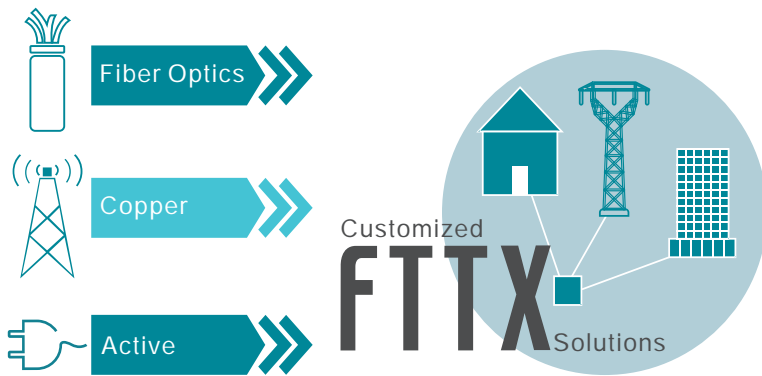






## Products & Services



- ◆ Customised FTTx Solutions
- ◆ Optical Fiber Distribution Frames
- ◆ Patch Panels
- ◆ Distribution Boxes (Optical & Copper)
- ◆ Cross-Connect Cabinets (Optical & Copper)
- ◆ Outdoor Cabinets
- ◆ Network Rack Cabinets
- ◆ Optical Cable Splice Closures
- ◆ Optical Cable Tray / Raceway Systems
- ◆ Power Solutions (PDU & Heat Exchangers & Rectifier Modules & Switching Power Supply)
- ◆ Optical Splitters
- ◆ Optical Distribution Modules / Splice Tray
- ◆ Fiber Optic Adapters / Patch Cords / Pigtaills
- ◆ Optical Tools / Accessories
- ◆ Digital Distribution Frames
- ◆ Busbar Trunking System

## Qualification



ISO 14001



ISO 9001

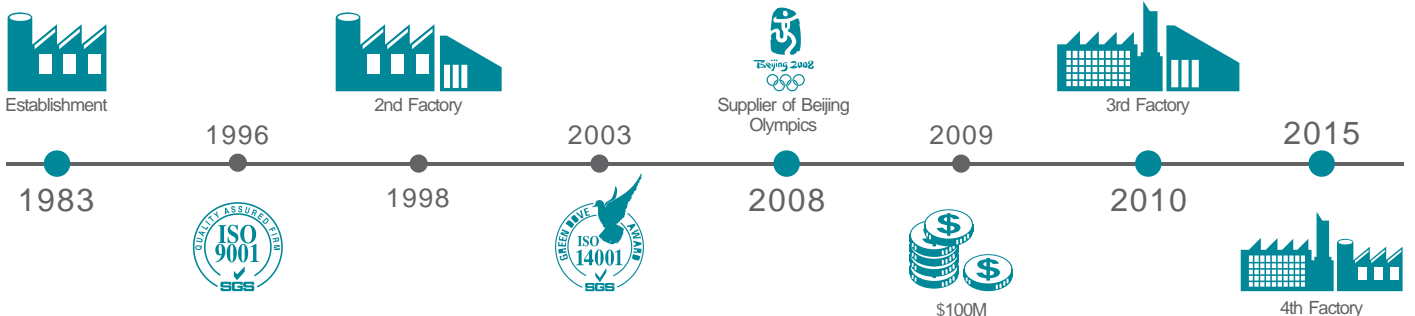


Quality Guarantee



Alibaba Assessment

## History of LongXing





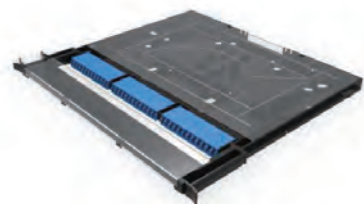
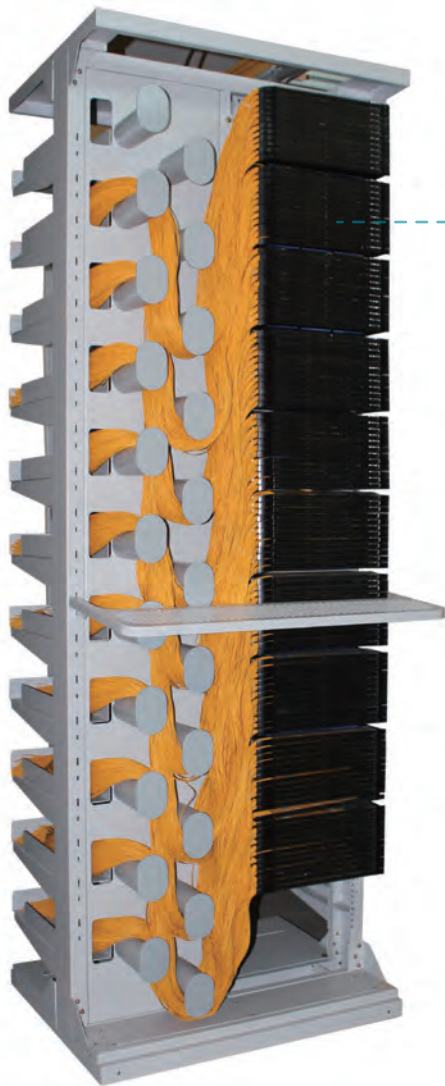
# CONTENTS

---

|                  |           |
|------------------|-----------|
| <b>ODF</b> ..... | <b>01</b> |
| GPX82-9-1 .....  | 02        |
| GPX82-9-2 .....  | 03        |
| GPX82-10 .....   | 04        |
| GPX09S .....     | 05        |
| GPX09T .....     | 06        |
| GPX82-6B .....   | 07        |
| GPX82-5 .....    | 08        |
| GPX82-4 .....    | 09        |
| GPX82-2 .....    | 10        |
| GPX82-1-1 .....  | 11        |
| GPX82-1-2 .....  | 12        |

|                          |           |
|--------------------------|-----------|
| <b>Patch Panel</b> ..... | <b>13</b> |
| ODU-L11 .....            | 13        |
| ODU-L10 .....            | 13        |
| ODU-L16 .....            | 14        |
| ODU-L20 .....            | 14        |
| ODU-L21 .....            | 15        |
| ODU-L22 .....            | 15        |
| ODU-L23 .....            | 16        |
| ODU-L24 .....            | 16        |
| ODU-L25 .....            | 17        |
| ODU-L1 .....             | 17        |
| ODU-L2 .....             | 18        |
| ODU-L3 .....             | 18        |
| ODU-L4 .....             | 19        |
| ODU-L5 .....             | 19        |
| ODU-L6 .....             | 20        |
| ODU-L7 .....             | 20        |
| ODU-L8 .....             | 21        |
| ODU-L9 .....             | 21        |

## GPX82-9-1 ▲



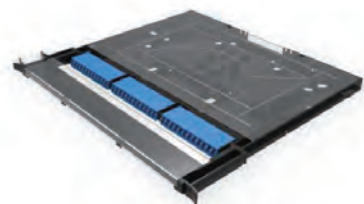
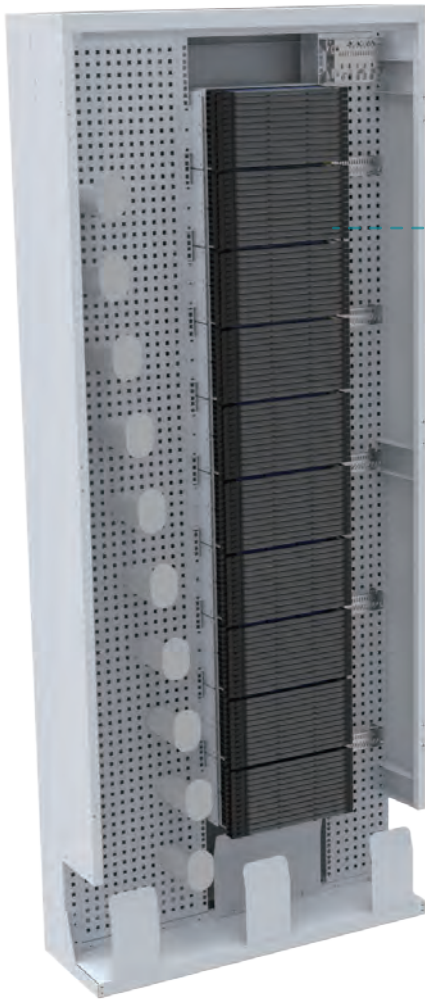
Series H

### Features

- Supports 4752 LC or 3168 SC ports per frame: Saves space through increased port density.
- Rear cable access only.
- Modular design: Enables one rack for many application spaces e.g. central office, headend, FTtx and data center.
- Increased patch cord routing space: Supports standard 1.6 and 2.0 mm patch cords.

| GPX82-9-1 | Dimensions(H*W*D)mm | Max Capacity(SC) | Max Capacity(LC) | Patch Panels |     |     |
|-----------|---------------------|------------------|------------------|--------------|-----|-----|
|           |                     |                  |                  | Model        | SC  | LC  |
|           | 2200*760*610        | 3168             | 4752             | 1U           | 72  | 108 |
| 2U        |                     |                  |                  | 144          | 216 |     |
| 4U        |                     |                  |                  | 288          | 432 |     |

GPX82-9-2 ▲



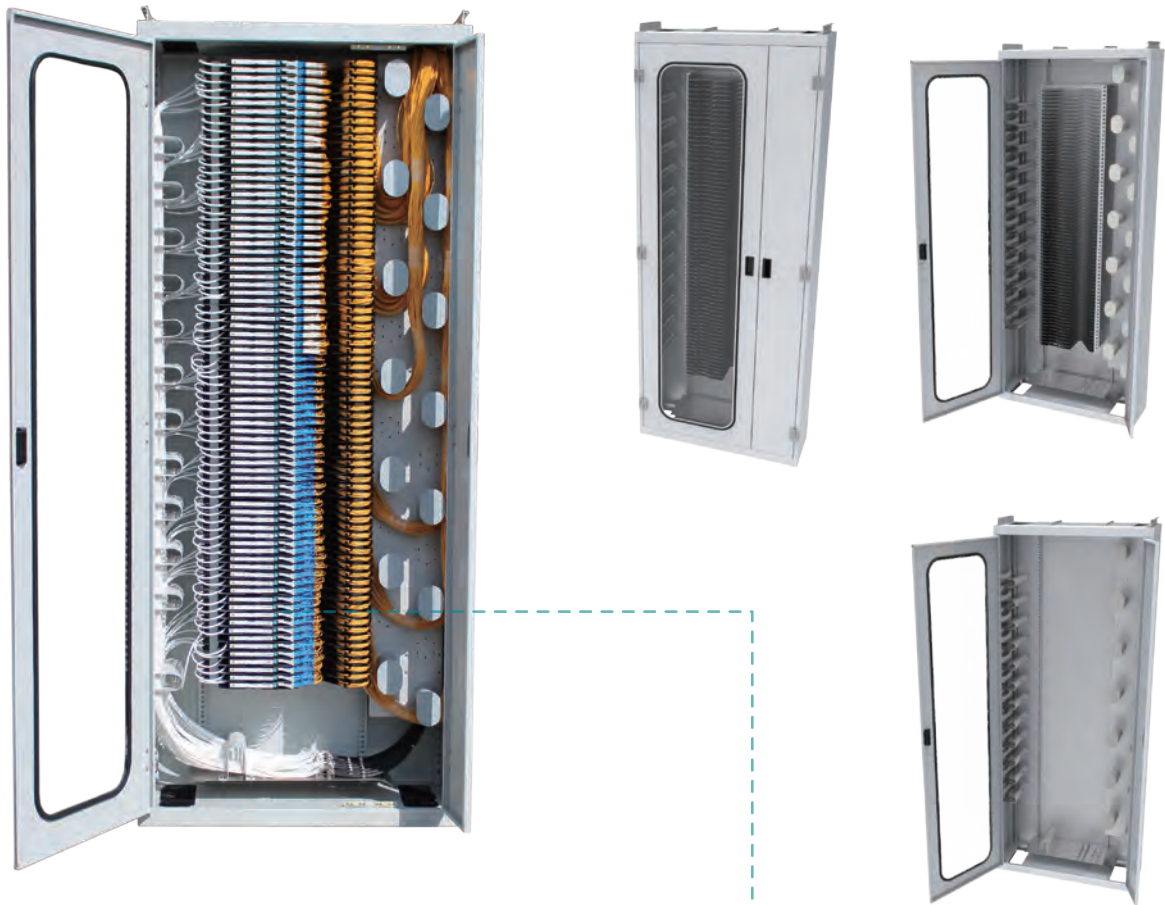
Series H

**Features**

- Supports 4,320 LC or 2,880 SC ports per cabinet: Saves space through increased port density.
- Front cable access only.
- Allows for back-to-back frame configuration.
- Modular design: Enables one rack for many application spaces e.g. central office, headend, FTTx and data center.
- Increased patch cord routing space: Supports standard 1.6 and 2.0 mm patch cords.

| GPX82-9-2 | Dimensions(H*W*D)mm | Max Capacity(SC) | Max Capacity(LC) | Patch Panels |     |     |
|-----------|---------------------|------------------|------------------|--------------|-----|-----|
|           |                     |                  |                  | Model        | SC  | LC  |
|           | 2200*900*300        | 2880             | 4320             | 1U           | 72  | 108 |
| 2U        |                     |                  |                  | 144          | 216 |     |
| 4U        |                     |                  |                  | 288          | 432 |     |

## GPX82-10 ▲



### Features

- Standard 19" & ETSI installations
- Designed to be used together with high density side access type modules
- Maximum fiber density of 2016 ports (splice & patch) and superior cable management
- Special cable glands to fix the maximum number of bundle cables on the ground
- Slot type cable guide compartments to feed the modules via miniflex tubes
- No crushed or stressed fibers
- Wide range of splice, patch and cable storage options
- Bend radius protection of 35 mm throughout entire frame and all modules
- Max cable protection
- Interchangeable cassettes for various cable/tube counts and connector styles
- Accepts WDM and splitter cassettes
- Integral patchcords management



**ODU-L21**

| GPX82-9-2    | Dimensions(H*W*D)mm | Max Capacity(SC) | Max Capacity(LC) | Patch Panels |     |    |
|--------------|---------------------|------------------|------------------|--------------|-----|----|
|              |                     |                  |                  | Model        | SC  | LC |
| 2200*900*300 | 1008                | 2016             | 3U               | 72           | 144 |    |



GPX09S ▲



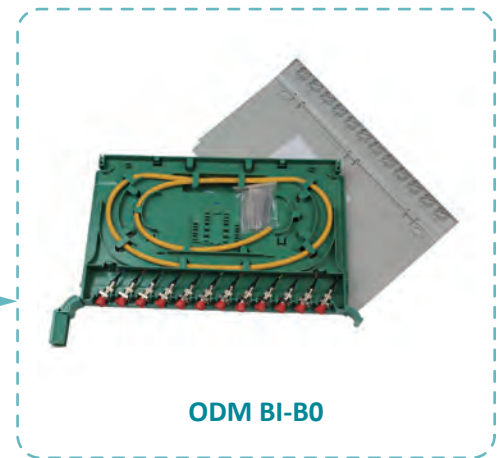
ODM BI-B0

**I Features**

- The frame is not only indoor terminal, but also double-sided optical fiber and pigtail equipment.
- Multi-function: Contains the functions of optical fiber terminal distribution, transfer and storage, with the advantage of big capacity, convenient for both operation and maintenance.
- Double-sided operation:  
 Line modules at front side are used to outside cable fixing, stripping, splice and terminal;  
 Row modules at back side are used to terminal equipments' pigtails and patch cords, left side fixing equipments' pigtails, as well as right side fiber-winding shaft.
- Multilayer horizontal fiber trays are installed on the row modules of the frame, convenient for frames combining.

|        | Dimensions(H*W*D) | Quantity of line module tray | Quantity of row module tray | Full capacity |
|--------|-------------------|------------------------------|-----------------------------|---------------|
| GPX09S | 2000*880*300      | 54                           | 1128芯SC                     | 1296          |
|        | 2200*880*300      | 60                           | 1296芯SC                     | 1440          |
|        | 2600*880*300      | 72                           | 1536芯SC                     | 1728          |

## GPX09T ▲



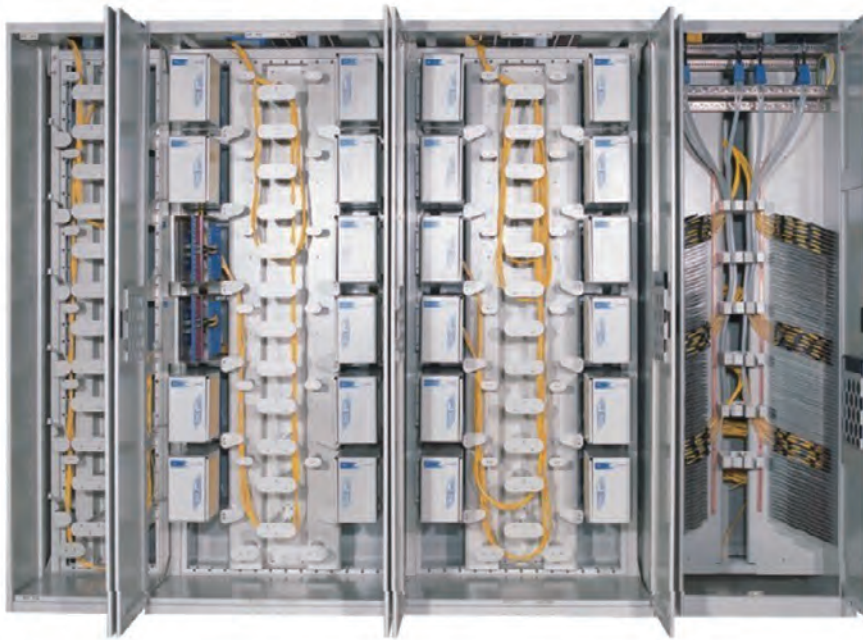
### Features

- Front rack mount brackets work most network cabinets.
- Removable front door with designation labels.
- Function of fiber storage.
- Vertical cable guides on exit side allow for managed routing and protection of the fiber exiting the panel.
- Protected patch panel offers secure environment for fibers.

|        | Dimensions(H*W*D)mm | Quantity of 12 cores integrated trays | Full capacity (without splitter tray) |
|--------|---------------------|---------------------------------------|---------------------------------------|
| GPX09T | 2600*900*300        | 8                                     | 576                                   |
|        | 2200*900*300        | 6                                     | 432                                   |
|        | 2000*900*300        | 4                                     | 288                                   |



GPX82-6B ▲



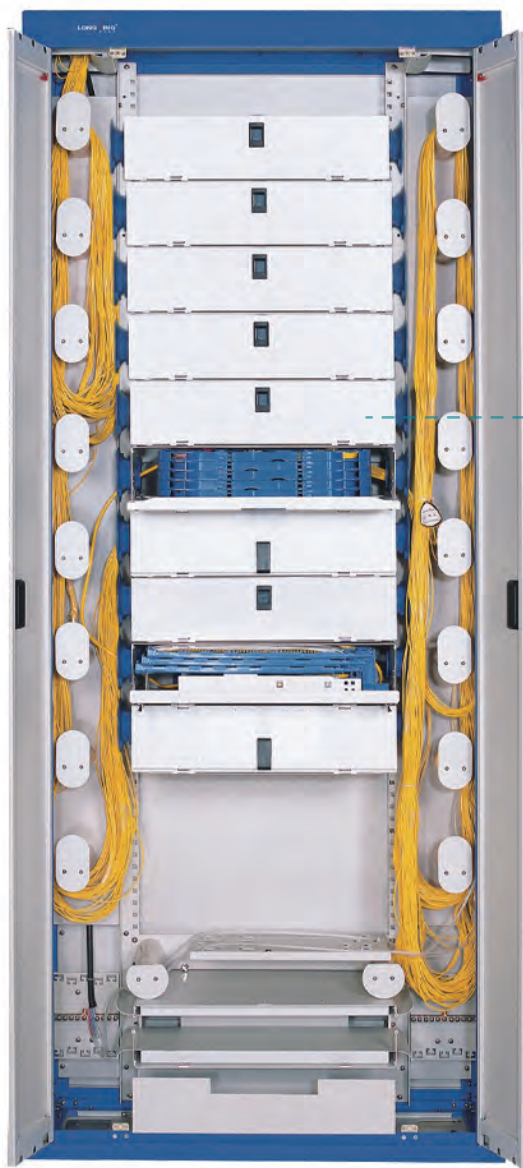
**I Features**

- Four cabins design: Consists of basic frame, expansion frame, integrated splice frame and fiber storage frame (custom combinations available).
- Hierarchical structure with the advantages of good performance of installation, maintenance and operational efficiency.
- This frame is suitable for large-capacity fiber optic into the client side management and business development needs.
- Modular design: The frame is comprised of optical distribution module, fiber splice tray module, rear horizontal fiber support groove.
- The distribution modules have the options of 72 cores and 96 core modules.
- Fiber support channel is provided for both single-layered structure and double-layered structure upon request.



|          | Description                  | Dimensions(H*W*D)mm | Capacity                              | Remark  |
|----------|------------------------------|---------------------|---------------------------------------|---|
| GPX82-6B | Fiber Storage Frame          | 2200*480*700        |                                       | Disc-shape splice trays and 6-position adapter holders are adopted. |
|          | Integrated Splice Frame      | 2200*720*700        | 12cores/tray, 144trays/frame          |   |
|          | Basic Distribution Frame     | 2200*900*700        | 72cores/unit, 864cores(12units)/frame |   |
|          | Expansion Distribution Frame | 2200*900*700        | 72cores/unit, 864cores(12units)/frame |   |

## GPX82-5



### Features

- Fully front side operation, convenient for maintenances.
- Cable guides mounted on left and right side of canal are removable and relocatable to different positions within the same vertical line, to ensure a minimum bend radius of 30mm for the patch cords from any ODFs.
- There are two lateral canals with separate doors (on left and right side of the frame) for distribution and management of fiber optical cables;
- The side-hinged doors help to well protect the patch cords distribution area.
- All the plastic elements in the frame are fire-resistant meets UL-94.

|         | Dimensions (H*W*D)mm | Capacity (cores) |
|---------|----------------------|------------------|
| GPX82-5 | 2600*900*300         | 720              |
|         | 2200*900*300         | 576              |

GPX82-4 ▲



**I Features**

- Fully front side operation, convenient for maintenances.
- Cable inlet system is installed on the top of the frame: Excellent performances for fixing the cables.
- Cables can be inlet either from the top or the bottom of the frame subject to different requirements.
- This frame is suitable for both common bundle cables and ribbon type cables.
- All adapters are installed 40 degrees inclining to the operation surface: Easier for connecting and also protect installers' eyes from the lights.
- Integrated splice and distribution module is adopted: Supports 12 FC adapters or 24 SC/LC adapters.

|         | Dimensions (H*W*D)mm | Modules | Max Capacity (FC/SC) | Max Capacity (LC) |
|---------|----------------------|---------|----------------------|-------------------|
| GPX82-4 | 2600*840*300         | 12      | 864                  | 1728              |
|         | 2200*840*300         | 8       | 576                  | 1152              |
|         | 2000*840*300         | 7       | 504                  | 1008              |



## GPX82-2 ▲

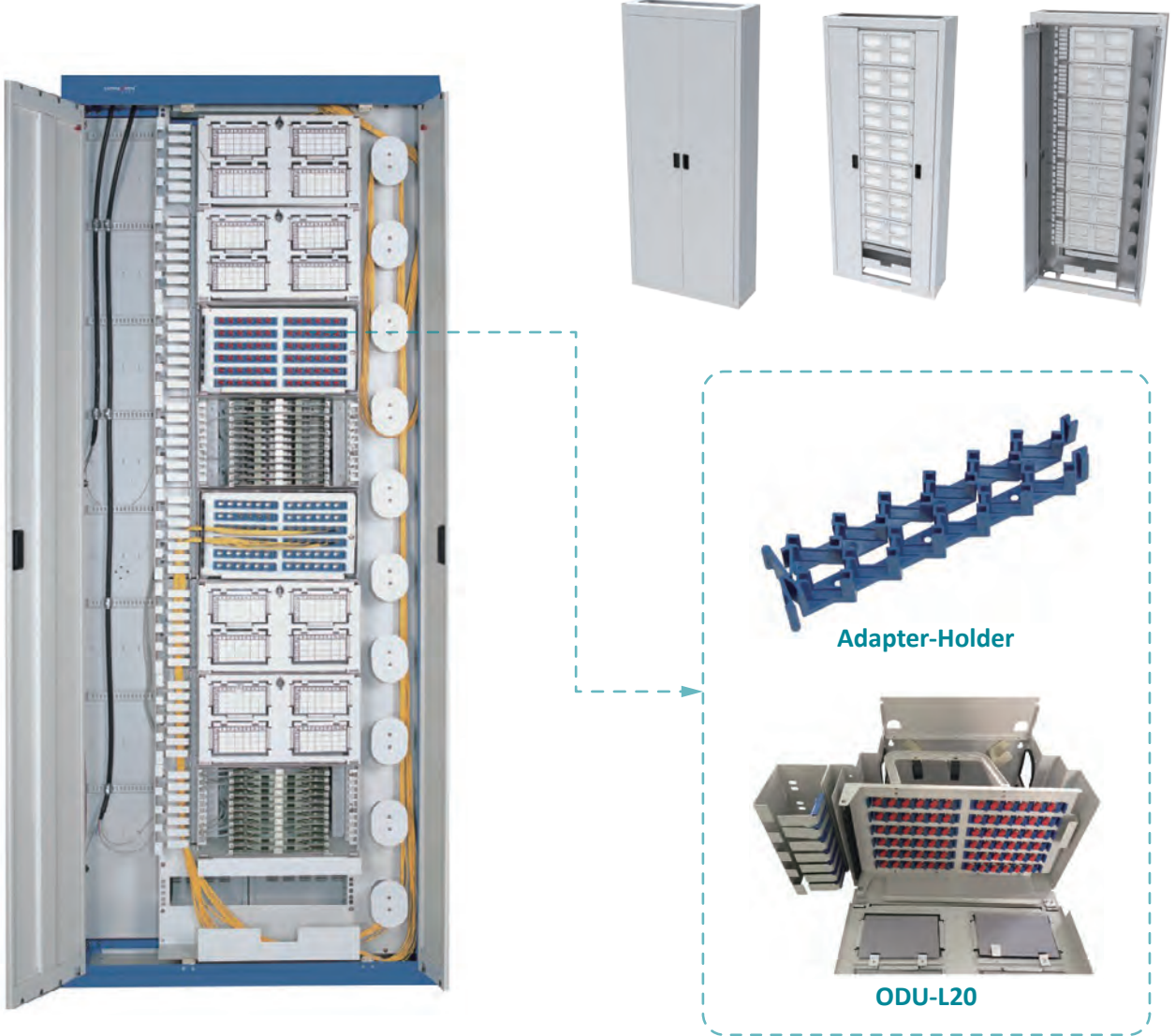


### Features

- Fully front side operation, convenient for maintenances.
- Cable inlet system is installed on the top of the frame: Excellent performances for fixing the cables.
- Cables can be inlet either from the top or the bottom of the frame subject to different requirements.
- This frame is suitable for both common bundle cables and ribbon type cables.
- All adapters are installed 40 degrees inclining to the operation surface: Easier for connecting and also protect installers' eyes from the lights.
- Modular design: Patch panel with independent cover for easy operation and maintenance
- Integrated splice and distribution module is adopted: Supports 12 FC adapters or 24 SC/LC adapters.

|         | Dimensions (H*W*D)mm | Modules | Max Capacity (FC/SC) | Max Capacity (LC) |
|---------|----------------------|---------|----------------------|-------------------|
| GPX82-2 | 2600*840*300         | 12      | 864                  | 1728              |
|         | 2200*840*300         | 8       | 576                  | 1152              |
|         | 2000*840*300         | 7       | 504                  | 1008              |

**GPX82-1-1** ▲

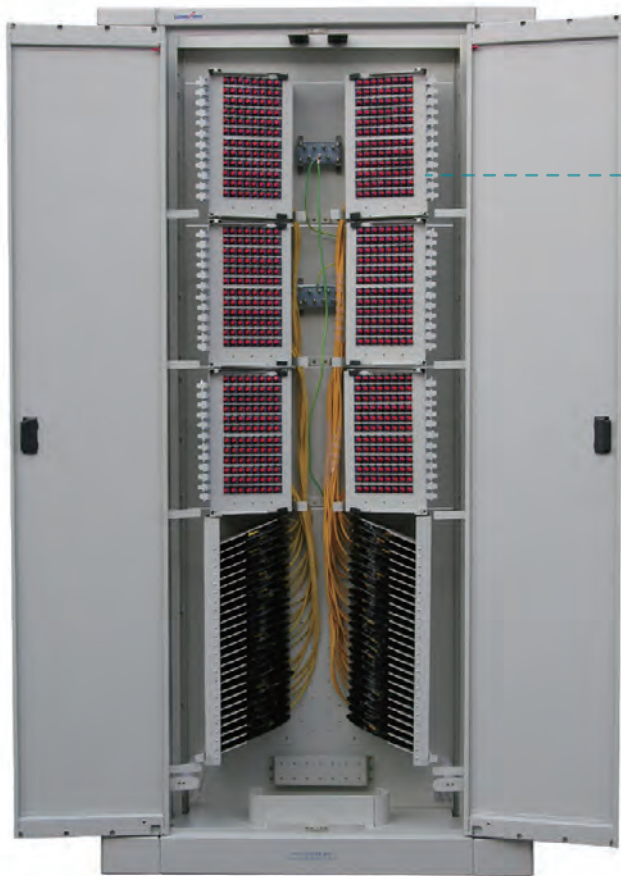


**Features**

- Fully-closed structure with the advantages of good performance of dust-proof, pleasing and neat appearance.
- Modular design: modular patch panel, fiber storing module and splice module are provided.
- The panel is equipped with a removable metal door, a vertical cable management trough, and plexiglass windows with designation labels.
- 6 position adapter holders must be ordered separately: The holders are available loaded with either FC, LC or SC type adapters.
- Optical cable can be entered/exited from the front so as to make operation and maintenance more convenient.
- Two types of frames: Fully front side operation or Both front side and back side operation.

|           |   | Dimensions (H*W*D)mm | Capacity (cores) |
|-----------|---|----------------------|------------------|
| GPX82-1-1 | Fully front side operation              | 2600*840*300         | 576              |
|           |   | 2200*840*300         | 432              |
|           |   | 2000*840*300         | 288              |
|           | Both front side and back side operation | 2600*600*300         | 288              |
|           |   | 2200*600*300         | 216              |
|           |   | 2000*600*300         | 144              |

## GPX82-1-2 ▲



### Features

- Fully front side operation, compact structure and distinct layer for convenient management and maintenances.
- Splice and distribution are separated and spread uniformly on the top and bottom sides of the frame.
- Enough space for fiber distribution and storage space.
- 6 position adapter holders must be ordered separately: The holders are available loaded with either FC, LC or SC type adapters.
- Frisbee style (UFO style) splice tray is adopted: up to 48 trays can be hold in one frame.
- This frame is suitable for both common bundle cables and ribbon type cables.

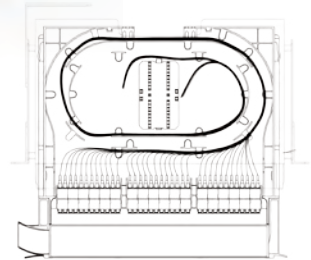
|           | Dimensions (H*W*D)mm | Modules | Capacity |
|-----------|----------------------|---------|----------|
| GPX82-1-2 | 2600*900*300         | 8       | 576      |
|           | 2200*900*300         | 6       | 432      |
|           | 2000*900*300         | 4       | 288      |



Adapter-Holder



## ODU-L11 ▲

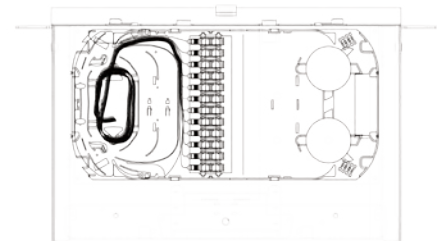


### Features

- Designed for a high-density fiber management system.
- Easy installation: 19", 21" and 23" rack mounting.
- Front rack mount brackets work with most network cabinets.
- Easy operations: using sliding rails to install the high density modules.
- Easy removable of modules.
- Multi-functions – Works with LongXing Series modules H1 (ultra high density).
- Protected patch panel offers secure environment for adapters, patch cords and pigtails.
- Adoptable adapter types: SC, LC.

| Model   | Dimension(mm)     |       |             | Capacity  |     |                 |
|---------|-------------------|-------|-------------|-----------|-----|-----------------|
|         |                   |       |             | Module H1 |     | Module Quantity |
|         | Height            | Depth | Width       | Capacity  |     |                 |
|         |                   |       |             | SC        | LC  |                 |
| ODU-L11 | 1U(without cover) | 280   | 19"/21"/23" | 72        | 108 | 3               |
|         | 2U                | 280   | 19"/21"/23" | 144       | 216 | 6               |
|         | 3U                | 280   | 19"/21"/23" | 216       | 324 | 9               |
|         | 4U                | 280   | 19"/21"/23" | 288       | 432 | 12              |

## ODU-L10 ▲



### Features

- Removable trays for easy upgrade (each tray can hold 12 adapters FC, SC, LC/Duplex).
- Tray have two different areas, one for splicing and the other for patching.
- Multiple configurations combining patching and splicing.
- External cable can be entered through two lateral (left and right) access – total front access for users.
- All fiber management accessories ensures a minimum curvature radius of 30mm.
- Multi-functions – Works with LongXing Series modules G (not just for splicing & terminating, also with options for splitters or fiber storage).
- Front door can be selected push button or key lock; allow easy access to the splicing and connectorization trays.
- Splice and connectorization tray allows entry and organization of patch cords up to 0.9mm in diameter.

| Model   | Dimension(mm) |       |         | Capacity |           |
|---------|---------------|-------|---------|----------|-----------|
|         | Height        | Depth | Width   | FC/SC/ST | LC duplex |
| ODU-L10 | 1U            | 280   | 19"/21" | 24       | 48        |
|         | 2U            | 280   | 19"/21" | 48       | 96        |
|         | 3U            | 280   | 19"/21" | 72       | 144       |
|         | 4U            | 280   | 19"/21" | 96       | 192       |

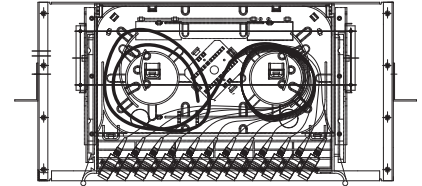
# Patch Panel

## ODU-L16



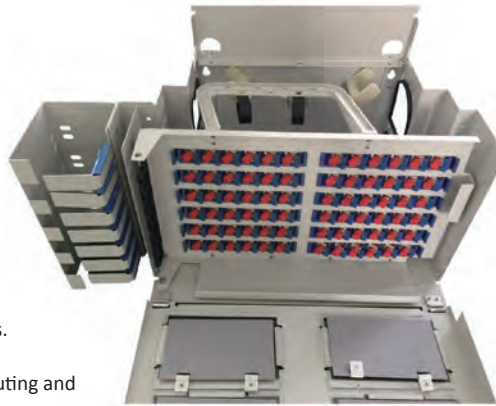
### Features

- Removable front door with designation labels.
- Multi-functions - Works with all **LongXing Series A modules** (not just for splicing & terminating, also with options for splitters or fiber storage).
- Protected patch panel offers secure environment for adapters, patch cords and pigtails.
- Adoptable adapter types: FC, SC, ST simplex adapters and LC duplex adapters.



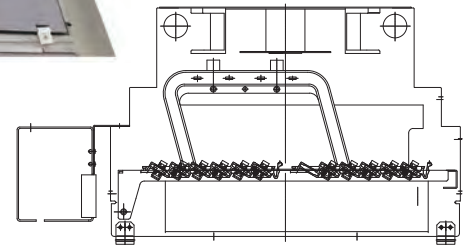
| Model   | Dimension(mm) |       |             | Capacity  |           |                 |           |                 |
|---------|---------------|-------|-------------|-----------|-----------|-----------------|-----------|-----------------|
|         |               |       |             | Module A1 |           |                 | Module A3 |                 |
|         | Height        | Depth | Width       | Capacity  |           | Module Capacity | Capacity  | Module Capacity |
|         |               |       |             | FC/SC/ST  | LC duplex |                 | FC/SC     |                 |
| ODU-L16 | 2U            | 216   | 19"/21"/23" | 24        | 48        | 2               | 48        | 2               |
|         | 3U            | 216   | 19"/21"/23" | 48        | 96        | 4               | 96        | 4               |
|         | 4U            | 216   | 19"/21"/23" | 72        | 144       | 6               | 144       | 6               |
|         | 5U            | 216   | 19"/21"/23" | 96        | 192       | 8               | 192       | 8               |

## ODU-L20



### Features

- Front rack mount brackets work most network cabinets.
- Removable front door with designation labels.
- Vertical cable guides on exit side allow for managed routing and protection of the fiber exiting the panel.
- Multi-functions - Works with all **LongXing Series A modules** (not just for splicing & terminating, also with options for fiber storage).
- Protected patch panel offers secure environment for adapters, patch cords and pigtails.
- Adoptable adapter types: FC, SC, ST simplex adapters and LC duplex adapters.



| Model   | Dimension(mm) |       |       | Capacity |           |
|---------|---------------|-------|-------|----------|-----------|
|         | Height        | Depth | Width | FC/SC    | LC Duplex |
| ODU-L20 | 266.7mm / 6U  | 257.6 | 19"   | 96       | 192       |
|         | 222.3mm / 5U  | 257.6 | 19"   | 72       | 144       |
|         | 133.4mm / 3U  | 257.6 | 19"   | 48       | 96        |
|         | 88.9mm / 2U   | 257.6 | 19"   | 24       | 48        |
|         | 44.5mm / 1U   | 257.6 | 19"   | 12       | 24        |

## ODU-L21 ▲



### Features

- Compact 3U patch panel, each U accommodates 2 fiber trays
- Each U accommodates 2 fiber trays with each max. Capacity of 24 fibers
- Max capacity of the patch panel is 144 fibers for SSF Duplex adapters
- Patch Panels are rear mounted for improved access
- Fiber trays and connected patch cords can slide in and out independently as a pull-out unit
- Easy side access ensures laser safety
- Special splice module design, which allows splicing on one side and professional cable storage on the other side without cable congestion
- Modules are tiltable up to 135 degree for ease of installation and maintenance
- Special incoming cable fixing unit which ensures strong, easy and quick cable fixing for miniflex tubes-no need to use time consuming plastic cable ties
- Integrated outgoing patch cords clamps and routing guides, which ensures min bend radius criteria of 35mm and professional cable management.

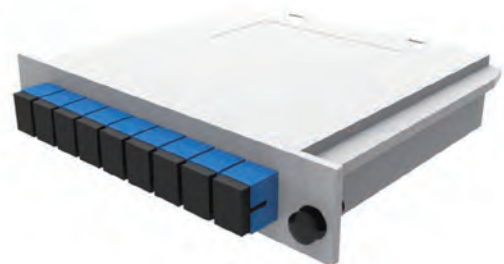
| Model   | Dimension(mm) |       |       | Capacity |           |
|---------|---------------|-------|-------|----------|-----------|
|         | Height        | Depth | Width | FC/SC    | LC Duplex |
| ODU-L21 | 3U            | 258   | 486   | 96       | 192       |

## ODU-L22 ▲



### Features

- Loaded with OSPM PLC Splitter (LGX Box)
  - <sup>2</sup> 1 U Rack Mount to hold 3 pieces of 1\*8 OSPM PLC Splitter (LGX Box)
  - <sup>2</sup> 2 U Rack Mount to hold 3 pieces of 1\*16 OSPM PLC Splitter (LGX Box)
  - <sup>2</sup> 3 U Rack Mount to hold 12 pieces of 1\*8 OSPM PLC Splitter (LGX Box)
- <sup>2</sup> Customized design available upon request.
- Compact Design
- Mount to standard EIA 19 " rack rails
- Steel construction with Black Powder Coating
- Ensure signal integrity, proper cable routing, bend radius control and cable protection
- Provide higher patch field density in fewer rack units saving valuable space
- Assures flexibility and ease of network deployment and moves, adds, and changes
- Provides a complete system solution for connectivity



| Model   | Dimensions and Capability |       |       |          |                      |
|---------|---------------------------|-------|-------|----------|----------------------|
|         | Height                    | Depth | Width | Capacity | Quantity of Splitter |
| ODU-L22 | 1U                        | 200   | 19"   | 24       | Qty. 3, 1*8          |
|         | 2U                        | 200   | 19"   | 48       | Qty. 3, 1*16         |
|         | 3U                        | 200   | 19"   | 96       | Qty. 3, 1*8          |



# Patch Panel

## ODU-L23 ▲



### Features

- Loaded with OSP-M1 PLC Splitter
- <sup>2</sup> 3 U Rack Mount to hold 4 pieces of 2\*32 OSPM PLC Splitter
- <sup>2</sup> Customized design available upon request.
- Compact Design
- Mount to standard EIA 19 " rack rails
- Steel construction with Black Powder Coating
- Ensure signal integrity, proper cable routing, bend radius control and cable protection
- Provide higher patch field density in fewer rack units saving valuable space
- Assures flexibility and ease of network deployment and moves, adds, and changes
- Provides a complete system solution for connectivity

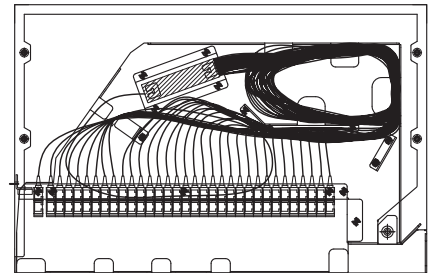
| Model   | Dimensions and Capability |       |       |          |                      |
|---------|---------------------------|-------|-------|----------|----------------------|
|         | Height                    | Depth | Width | Capacity | Quantity of Splitter |
| ODU-L23 | 3U                        | 150   | 19"   | 96       | Qty. 8, 1*16         |
|         | 3U                        | 150   | 19"   | 96       | Qty. 4, 2*32         |

## ODU-L24 ▲



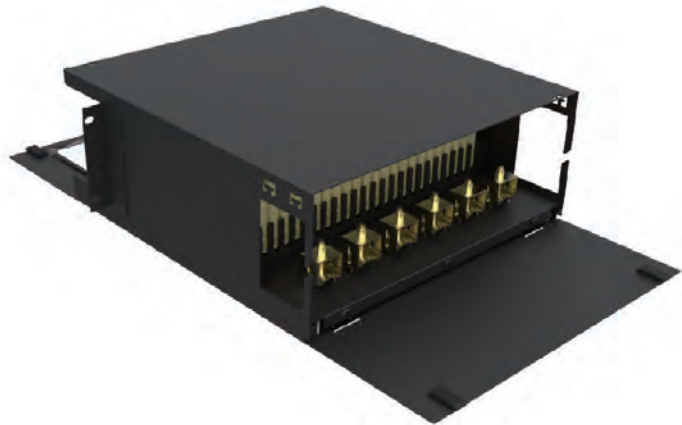
### Features

- 1 U (enables splitting up to 32 SC or 64 LC ports)
- Swing Out system with front cable management for patch cords
- Manages small & large quantities of fiber with a high packing density
- Compact Design
- Mount to standard EIA 19 " rack rails
- Steel construction with Black Powder Coating
- Ensure signal integrity, proper cable routing, bend radius control and cable protection
- Provide higher patch field density in fewer rack units saving valuable space
- Assures flexibility and ease of network deployment and moves, adds, and changes
- Provides a complete system solution for connectivity
- 1:2, 1:4, 2:4, 1:8, 2:8, 1:16, 2:16, 1:32, 2:32, 1:64, 2:64 splitters of SC/LC connector types can be embedded inside.



| Model   | Dimensions and Capability |       |       |          |                      |
|---------|---------------------------|-------|-------|----------|----------------------|
|         | Height                    | Depth | Width | Capacity | Quantity of Splitter |
| ODU-L24 | 1U / 44.5mm               | 280   | 19"   | 32 SC    | Qty. 1, 1*32 / 2*32  |
|         | 1U / 44.5mm               | 280   | 19"   | 64 LC    | Qty. 1, 1*64 / 2*64  |

## ODU-L25 ▲

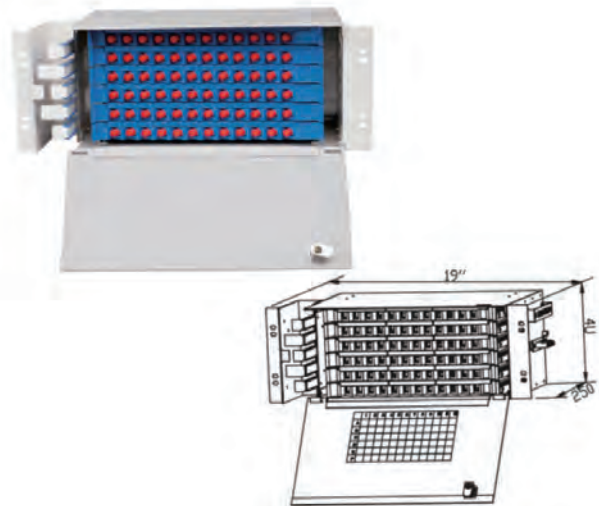


### Features

- Top quality steel with cover by nonflammable electrostatic painted ensures a strong body, resistance to corrosive influences and pleasing appearance.
- Front and rear door have push buttons; allow easy access to the splicing trays.
- Easy operations: Sliding mechanism both forward and backward.
- Easy installations: 19" wall mounting.
- For standard 19" racks use (other rack width options available on request)
- Adoptable adapter types: SC simplex adapters and LC duplex adapters.

| Model   | Dimension(mm) |       |       | Capacity |           |
|---------|---------------|-------|-------|----------|-----------|
|         | Height        | Depth | Width | SC       | LC duplex |
| ODU-L25 | 4U            | 450   | 19"   | 144      | 288       |

## ODU-L1 ▲



### Features

- Front rack mount brackets work most network cabinets.
- Removable front door with designation labels.
- Vertical cable guides on exit side allow for managed routing and protection of the fiber exiting the panel.
- Multi-functions - Works with all **LongXing Series A modules** (not just for splicing & terminating, also with options for fiber storage).
- Protected patch panel offers secure environment for adapters, patch cords and pigtails.
- Adoptable adapter types: FC, SC, ST simplex adapters and LC duplex adapters.

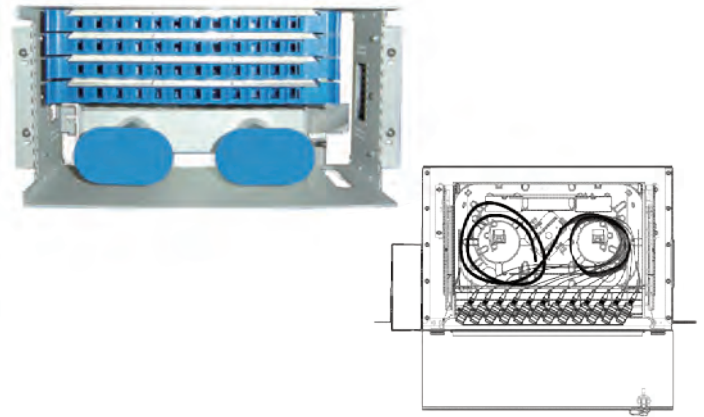
| Model  | Dimension(mm) |       |             | Capacity  |           |                 |          |                 |
|--------|---------------|-------|-------------|-----------|-----------|-----------------|----------|-----------------|
|        |               |       |             | Module A1 |           | Module A3       |          |                 |
|        | Height        | Depth | Width       | Capacity  |           | Module Capacity | Capacity | Module Capacity |
|        |               |       |             | FC/SC/ST  | LC duplex |                 | FC/SC    |                 |
| ODU-L1 | 2U            | 250   | 19"/21"/23" | 24        | 48        | 2               | 48       | 2               |
|        | 3U            | 250   | 19"/21"/23" | 48        | 96        | 4               | 96       | 4               |
|        | 4U            | 250   | 19"/21"/23" | 72        | 144       | 6               | 144      | 6               |
|        | 5U            | 250   | 19"/21"/23" | 96        | 192       | 8               | 192      | 8               |

# Patch Panel

## ODU-L2

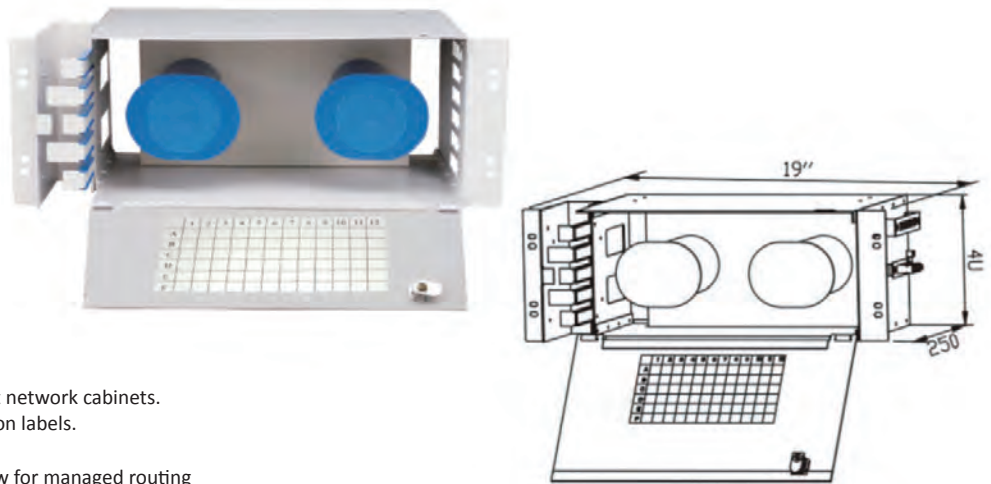
### Features

- Front rack mount brackets work with most network cabinets.
- Removable front door with designation labels.
- Integrated splicing, distribution with fiber storage.
- Vertical cable guides on exit side allow for managed routing and protection of the fiber exiting the panel.
- Multi-functions - Works with all **LongXing Series A modules** (not just for splicing & terminating, also with options for fiber storage).
- Protected patch panel offers secure environment for adapters, patch cords and pigtails.
- Adoptable adapter types: FC, SC, ST simplex adapters and LC duplex adapters.



| Model  | Dimension(mm) |       |             | Capacity  |           |                 |           |                 |
|--------|---------------|-------|-------------|-----------|-----------|-----------------|-----------|-----------------|
|        |               |       |             | Module A1 |           |                 | Module A3 |                 |
|        | Height        | Depth | Width       | Capacity  |           | Module Capacity | Capacity  | Module Capacity |
|        |               |       |             | FC/SC/ST  | LC duplex |                 | FC/SC     |                 |
| ODU-L2 | 4U            | 250   | 19"/21"/23" | 12        | 24        | 1               | 24        | 1               |
|        |               |       |             | 24        | 48        | 2               | 48        | 2               |
|        | 5U            | 250   | 19"/21"/23" | 36        | 72        | 3               | 72        | 3               |
|        |               |       |             | 48        | 96        | 4               | 96        | 4               |

## ODU-L3



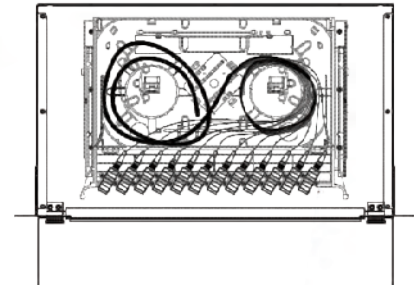
### Features

- Front rack mount brackets work most network cabinets.
- Removable front door with designation labels.
- Function of fiber storage.
- Vertical cable guides on exit side allow for managed routing and protection of the fiber exiting the panel.
- Protected patch panel offers secure environment for fibers.

| Model  | Dimension(mm) |       |             | Capacity |
|--------|---------------|-------|-------------|----------|
|        | Height        | Depth | Width       |          |
| ODU-L3 | 4U            | 250   | 19"/21"/23" | 144      |



## ODU-L4

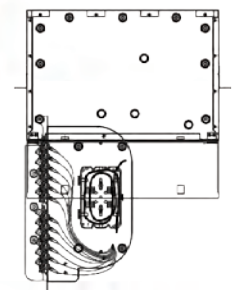


### Features

- Removable front door with designation labels.
- Multi-functions - Works with all **LongXing Series A modules** (not just for splicing & terminating, also with options for splitters or fiber storage).
- Protected patch panel offers secure environment for adapters, patch cords and pigtails.
- Adaptable adapter types: FC, SC, ST simplex adapters and LC duplex adapters.

| Model  | Dimension(mm) |       |             | Capacity  |           |                 |           |                 |
|--------|---------------|-------|-------------|-----------|-----------|-----------------|-----------|-----------------|
|        |               |       |             | Module A1 |           |                 | Module A3 |                 |
|        | Height        | Depth | Width       | Capacity  |           | Module Capacity | Capacity  | Module Capacity |
|        |               |       |             | FC/SC/ST  | LC duplex |                 | FC/SC     |                 |
| ODU-L4 | 1U            | 300   | 19"/21"/23" | 12        | 24        | 1               | 24        | 1               |
|        |               |       |             | 24        | 48        | 2               | 48        | 2               |
|        | 2U            | 300   | 19"/21"/23" | 36        | 72        | 3               | 72        | 3               |
|        |               |       |             | 48        | 96        | 4               | 96        | 4               |
|        | 3U            | 300   | 19"/21"/23" | 60        | 120       | 5               | 120       | 5               |
|        |               |       |             | 72        | 144       | 6               | 144       | 6               |
|        | 4U            | 300   | 19"/21"/23" | 60        | 120       | 5               | 120       | 5               |
|        |               |       |             | 72        | 144       | 6               | 144       | 6               |

## ODU-L5



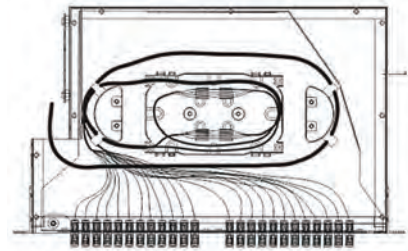
### Features

- For stand 19" racks use (other rack width options available on request).
- Easy operations: Rotate style.
- Cable can be entered on both left and right sides.
- Total front access for users.
- LongXing adapter panels are used for quick and easy adapter installations.
- Removable front door with designation labels.
- Protected patch panel offers secure environment for adapters, patch cords and pigtails.
- High Density, see the capacity chart below.
- Adaptable adapter types: FC, SC, ST simplex adapters and LC duplex adapters.

| Model  | Dimension(mm) |       |             | Capacity |           |
|--------|---------------|-------|-------------|----------|-----------|
|        | Height        | Depth | Width       | FC/SC/ST | LC duplex |
| ODU-L5 | 1U            | 300   | 19"/21"/23" | 12       | 24        |
|        |               |       |             | 24       | 48        |
|        | 2U            | 300   | 19"/21"/23" | 36       | 72        |
|        |               |       |             | 48       | 96        |
|        | 3U            | 300   | 19"/21"/23" | 60       | 120       |
|        |               |       |             | 72       | 144       |
|        | 4U            | 300   | 19"/21"/23" | 84       | 168       |
|        |               |       |             | 96       | 192       |

# Patch Panel

## ODU-L6 ▲

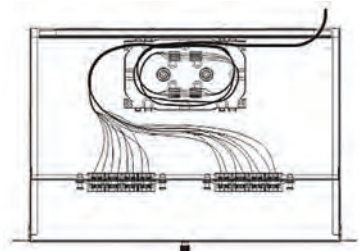


### Features

- Minimum bend radius controlled.
- Rotate Type, very easy installation and maintenances.
- Cable fixing units provided.

| Model  | Dimension(mm) |       |             | Capacity |           |
|--------|---------------|-------|-------------|----------|-----------|
|        | Height        | Depth | Width       | FC/SC/ST | LC duplex |
| ODU-L6 | 1U            | 280   | 19"/21"/23" | 24       | 48        |
|        | 2U            | 280   | 19"/21"/23" | 48       | 96        |

## ODU-L7 ▲

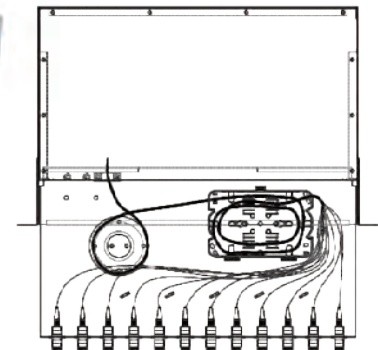


### Features

- Removable front-top cover for easier operations.
- Protected patch panel offers secure environment for adapters, patch cords and pigtails.
- Height: 1U-2U, depends on capacity and adapter type chosen.
- Adoptable adapter types: FC, SC, LC, ST, E2000.
- Adapter Panel adopted for easy operation.

| Model  | Dimension(mm) |       |             | Capacity |           |
|--------|---------------|-------|-------------|----------|-----------|
|        | Height        | Depth | Width       | FC/SC/ST | LC duplex |
| ODU-L7 | 1U            | 280   | 19"/21"/23" | 16       | 16        |
|        |               |       |             | 24       | 24        |
|        | 2U            | 280   | 19"/21"/23" | 32       | 32        |
|        |               |       |             | 48       | 48        |

## ODU-L8

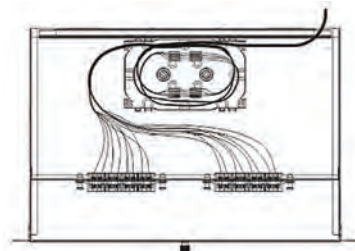


### Features

- Easy operations: Drawer style.
- Cable inlet system provided on the rear side which has excellent performances for fixing outdoor cables.
- Fully stable patch panel, no risk of movement.
- Adoptable adapter types: FC, SC, LC.
- Options of Splice trays & fiber management guides.

| Model  | Dimension(mm) |       |             | Capacity |           |
|--------|---------------|-------|-------------|----------|-----------|
|        | Height        | Depth | Width       | FC/SC/ST | LC duplex |
| ODU-L8 | 1U            | 300   | 19"/21"/23" | 24       | 48        |
|        | 2U            | 300   | 19"/21"/23" | 48       | 96        |

## ODU-L7



### Features

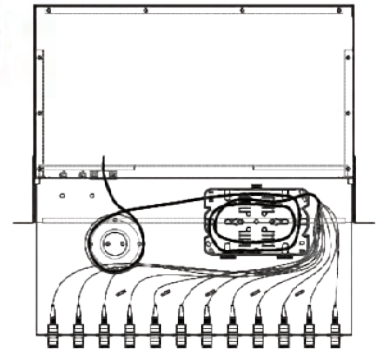
- Removable front-top cover for easier operations.
- Protected patch panel offers secure environment for adapters, patch cords and pigtails.
- Height: 1U-2U, depends on capacity and adapter type chosen.
- Adoptable adapter types: FC, SC, LC, ST, E2000.
- Adapter Panel adopted for easy operation.

| Model  | Dimension(mm) |       |             | Capacity |           |
|--------|---------------|-------|-------------|----------|-----------|
|        | Height        | Depth | Width       | FC/SC/ST | LC duplex |
| ODU-L7 | 1U            | 280   | 19"/21"/23" | 16       | 16        |
|        |               |       |             | 24       | 24        |
|        | 2U            | 280   | 19"/21"/23" | 32       | 32        |
|        |               |       |             | 48       | 48        |



# Patch Panel

## ODU-L8

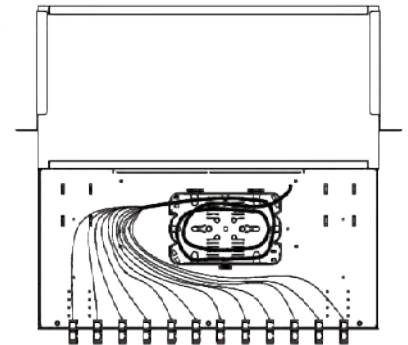


### Features

- Easy operations: Drawer style.
- Cable inlet system provided on the rear side which has excellent performances for fixing outdoor cables.
- Fully stable patch panel, no risk of movement.
- Adoptable adapter types: FC, SC, LC.
- Options of Splice trays & fiber management guides.

| Model  | Dimension(mm) |       |             | Capacity |           |
|--------|---------------|-------|-------------|----------|-----------|
|        | Height        | Depth | Width       | FC/SC/ST | LC duplex |
| ODU-L8 | 1U            | 300   | 19"/21"/23" | 24       | 48        |
|        | 2U            | 300   | 19"/21"/23" | 48       | 96        |

## ODU-L9



### Features

- Easy installations: 19", 21" and 23" wall mounting.
- Easy operations: Drawer-type.
- Fully stable patch panel, no risk of movement.
- Protected patch panel offers secure environment for for adapters, patch cords and pigtails.
- Height: 1U, depends on capacity and adapter type chosen.
- Adoptable adapter types: FC, SC, ST and LC .
- Adapter Panel adopted for easy operation. Cable fixing units provided.
- Optional parts: splice trays, fiber management guides.

| Model  | Dimension(mm) |       |             | Capacity |           |
|--------|---------------|-------|-------------|----------|-----------|
|        | Height        | Depth | Width       | FC/SC/ST | LC duplex |
| ODU-L9 | 1U            | 260   | 19"/21"/23" | 48       | 60        |







Factory Overview



Metal Sheet Workshop



Fiber Optic Workshop



Welding Workshop



Laser Cutting



Painting Workshop



Assembly Workshop I



Assembly Workshop II



**LONGXING**

**LONGXING**

Add:18 Anju Road, Beilun, Ningbo, 315800, China

Tel: +86 574 87917627 ( English & Chinese )

Fax: +86 574 87908188

Postcode: 315800

Email: sales@lxtelecom.com

Website: www.lxtelecom.com

Ver. OCT160426



Recycled Paper

**ATTENTION:**

Specifications published here are current as of the date of publication of this document. Because we are continuously improving our products, LongXing reserves the right to change specifications without prior notice. At any time, you may verify product specifications by contacting LongXing.